

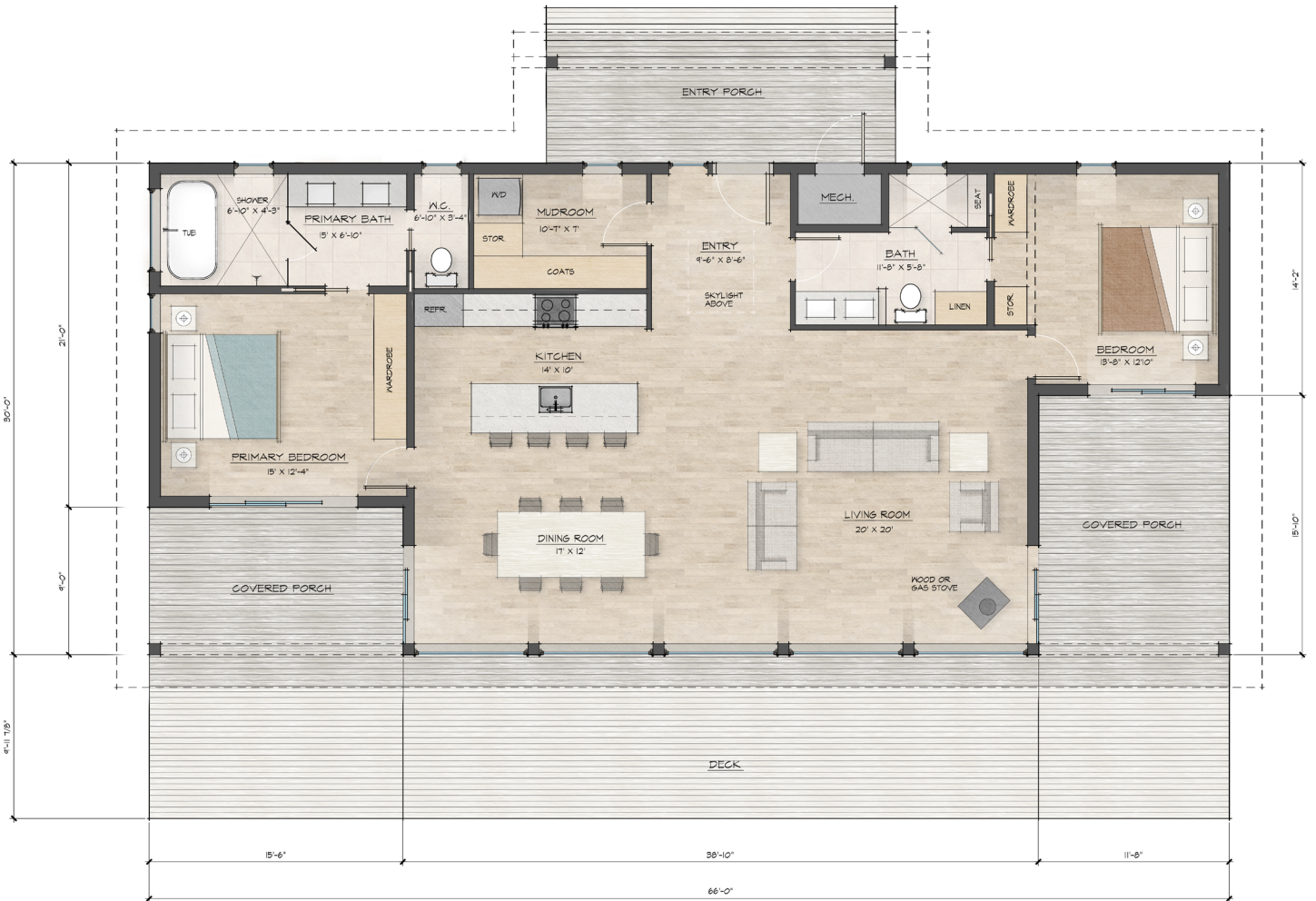
CABIN MODEL :

# KUSTAVI 154

Inspired by the cabins of Kustavi, an island community in the Finnish archipelago, NordHavn's Kustavi 154 cabin combines a stylish, modern Scandinavian design with authentic Maine craftsmanship to create an exceptional home with a strong connection to its natural surroundings. Designed by Pluspuu® of Finland and adapted for today's lifestyle, NordHavn's 2-bed, 2-bath Kustavi features a mono-pitch roof with a broad glass wall overlooking a front terrace deck. It merges a stylish modern interior using natural, ecologically sourced materials with a contemporary architectural form and exterior finish that blends seamlessly into its surroundings. The sustainably constructed home features an interior layout that has been smartly organized and includes high-end finishes reflecting modern Scandinavian design cues throughout.

The impressive entry to the Kustavi is tall with a large overhead skylight and an adjoining mudroom outfitted with built-in storage and laundry. The entry reveals a large open living area and modern corner fireplace on one side and an inviting dining area big enough for family and friends on the other. The large kitchen with ample eat-in island, premium paneled appliances, and custom cabinets blends seamlessly into this space, and everything faces a panoramic floor-to-ceiling glass wall. This space is book-ended by two bedroom suites, both which feature ensuite baths and open onto private decks for the ultimate in luxury cabin living. The primary bedroom is notable for its spa-like bath with soaking tub, walk-in shower, floating double vanity, and heated floor and towel rack. Embedded in the natural landscape, with nearly as much outdoor as indoor living space, the Kustavi is a benchmark for indoor-outdoor living.

Representative photos only; courtesy of Pluspuu Talot (Helsinki, Finland)



• 2 BEDROOMS • 2 BATHS • 1,656 SF OF INDOOR LIVING SPACE • 1,123 SF OF OUTDOOR LIVING SPACE