

CABIN MODEL:

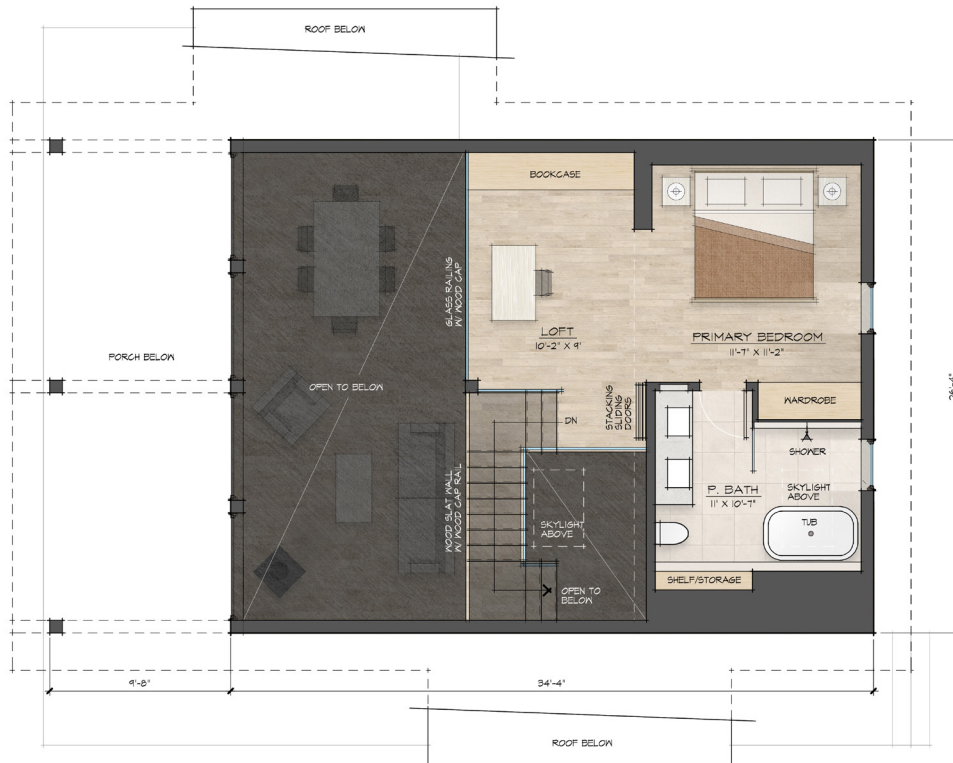
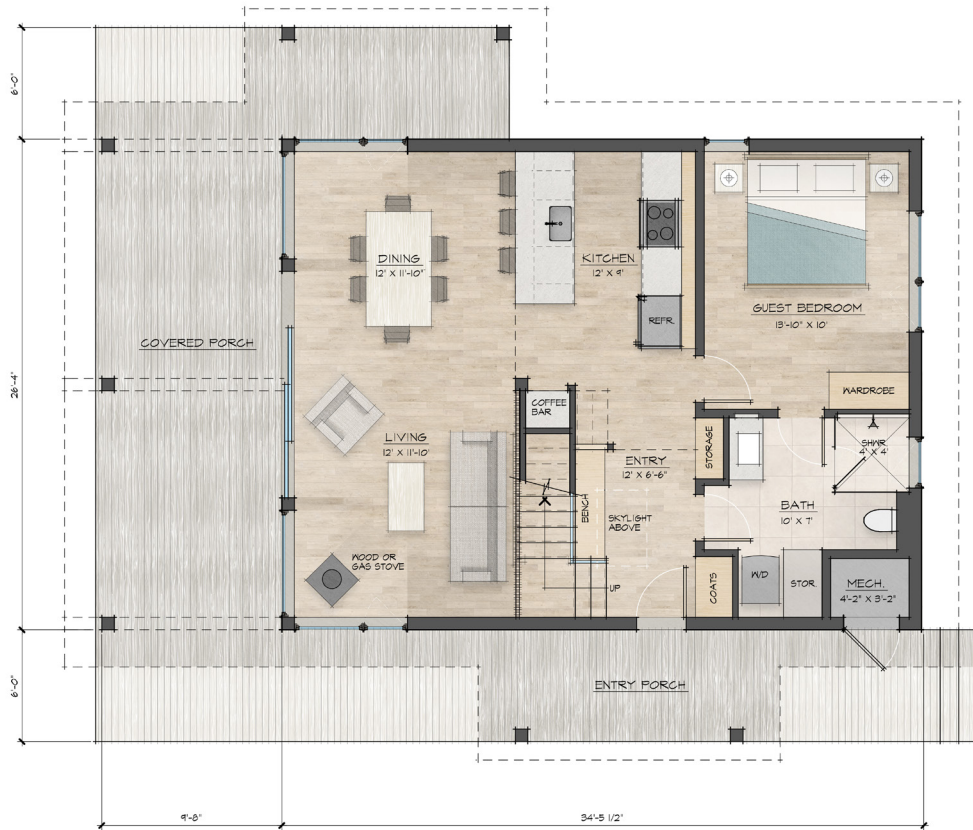
# INIÖ 126

The design inspiration for the Iniö 126 is a Scandinavian fjällhus (“mountain house”), a chalet-style cabin with a clean, simple architectural form featuring a gabled roof with deep eaves sheltering a wrap-around deck. Designed by Pluspuu® of Finland and adapted for today’s Maine lifestyle, NordHavn’s 2-bed, 2-bath Iniö combines a stylish contemporary interior with natural, ecologically sourced materials and a modern exterior finish that blends seamlessly into its surroundings. The sustainably-constructed home features a smartly organized interior layout that includes high-end finishes and reflects modern Scandinavian design cues throughout.

The entry to the Iniö has ample built-in storage, seating, and a large overhead skylight. It opens into a dramatic living space with a tall cathedral ceiling and a floor-to-

peak glass wall. The inviting living space is accented by a sculptural modern fireplace. A comfortable dining area connects with a beautiful and efficient kitchen with custom cabinetry, premium appliances, and eat-in island, adding a warm, cozy feeling to the Iniö. A first-floor bedroom with semi-private bath and laundry is perfect for friends and family. Following the stairs up to a second-floor balcony, the primary bedroom suite features a movable wall system that opens to a flexible loft space and a dramatic view. An ensuite, spa-like bath includes a free-standing soaking tub, walk-in shower, double floating vanity, and heated floors and towel rack, giving the feel of a bespoke luxury hotel suite.

Representative photos only; courtesy of Pluspuu Talot (Helsinki, Finland)



• 2 BEDROOMS • 2 BATHS • 1,360 SF OF INDOOR LIVING SPACE • 585 SF OF OUTDOOR LIVING SPACE